




CLANK!TM ORGANIZER



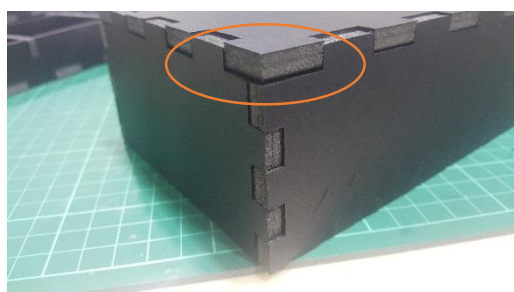
Assembly Instructions

GENERAL ASSEMBLY GUIDELINES

- All panels are labeled with an Alphabet and a number e.g. A1, B1 etc.
- Layout the parts in the diagrams provided (without glue) to ensure you have all the parts and they are in the right orientation.
- Apply glue to the areas indicated by the **ORANGE** lines ().
- Allow 1-2 hours to dry before using.
- Visit <https://www.piecehaven.com/assembly-instructions> for general assembly videos.

USEFUL TIPS

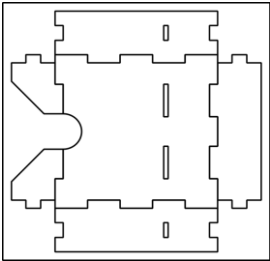
- Use your fingernail to score carefully along the cutting lines to remove each piece from the foam board frame.
- Wipe excess glue off with toothpicks or something similar.
- *OPTIONAL:* Due to irregularities in material, there **may** be gaps after applying glue. Use pins to keep the walls flush. Once the glue dries, remove the pins.



PLAYER TRAY

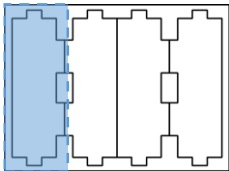


Sheet A1



X4

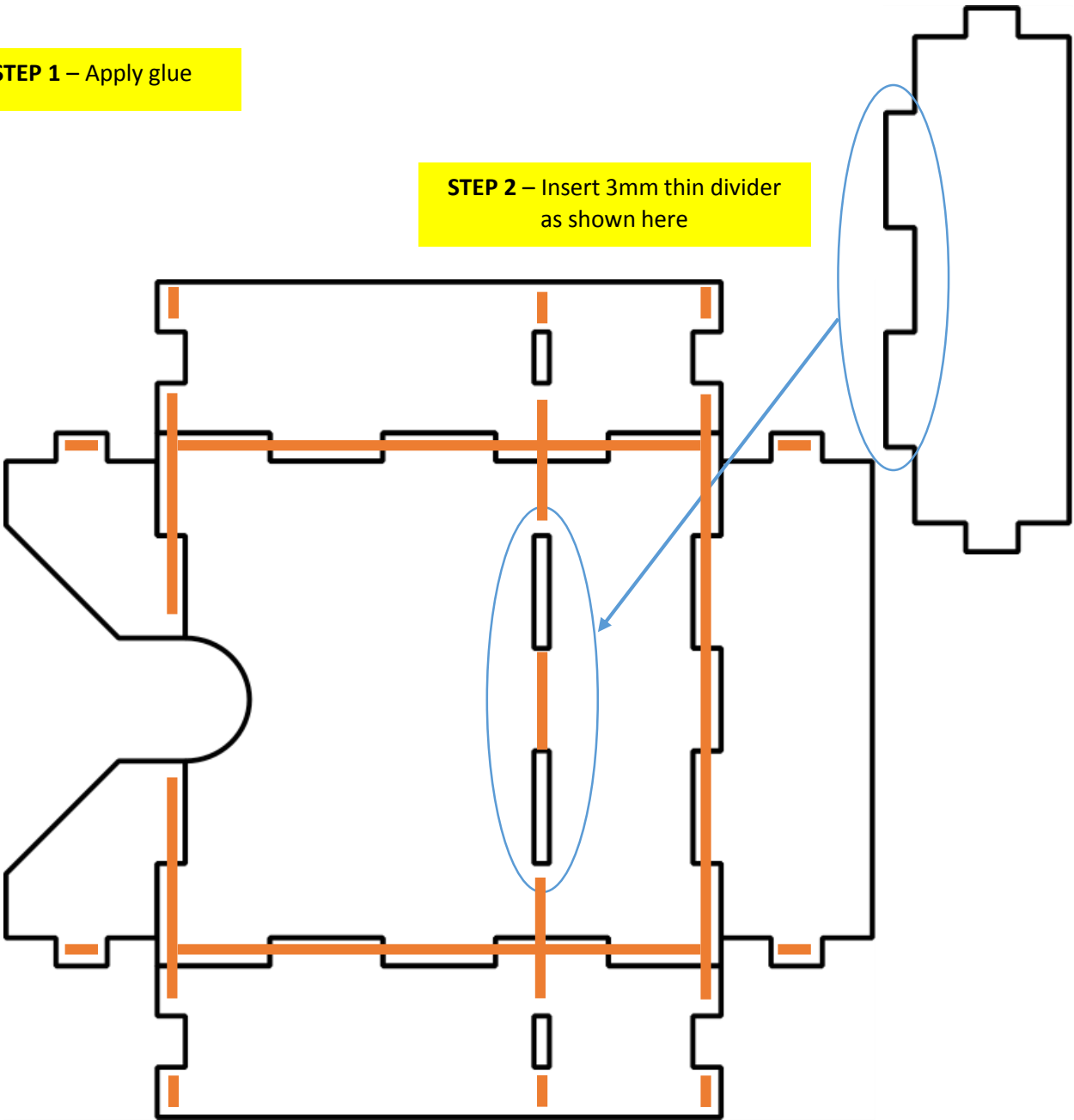
Sheet A2 **



** This sheet is 3mm thin, NOT 5mm

STEP 1 – Apply glue

STEP 2 – Insert 3mm thin divider as shown here



STEP 3 – Assemble all side walls

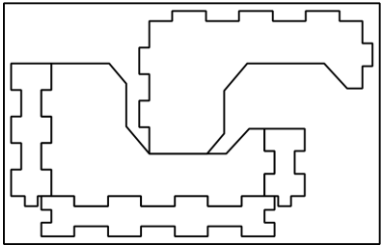
Repeat 4X



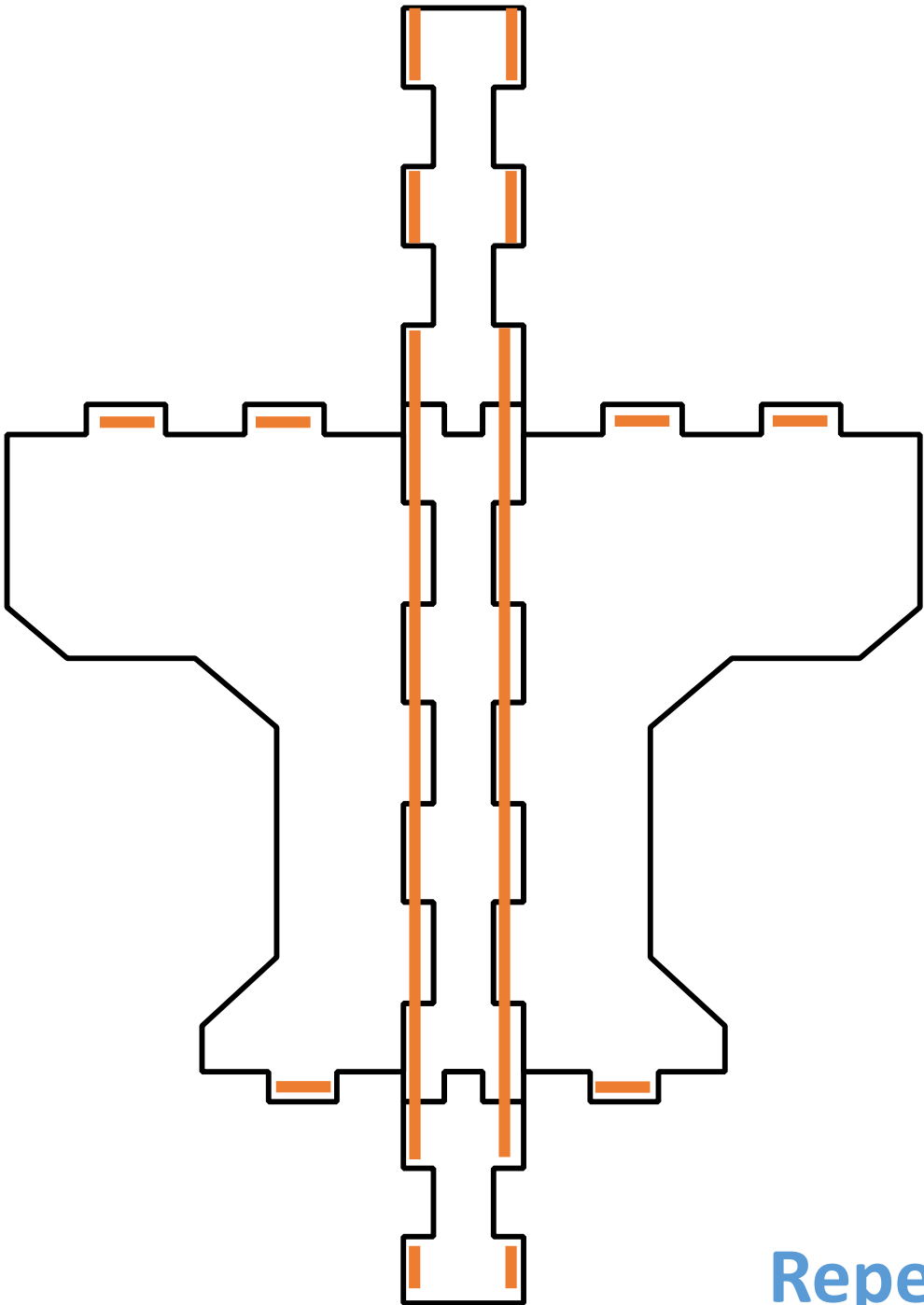
RESERVE CARDS TRAY



Sheet B1



X4



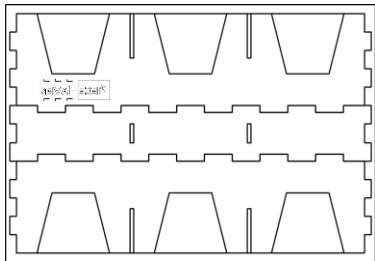
Repeat 4X



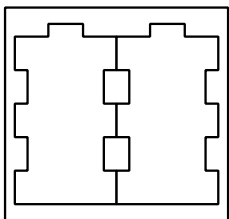
DUNGEON CARDS TRAY



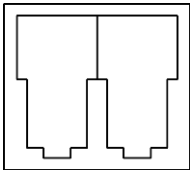
Sheet C1



Sheet C2

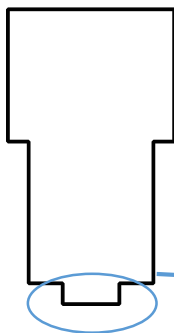
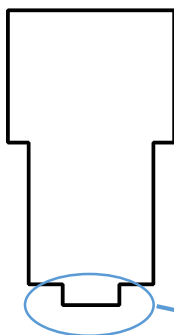


Sheet C3 **

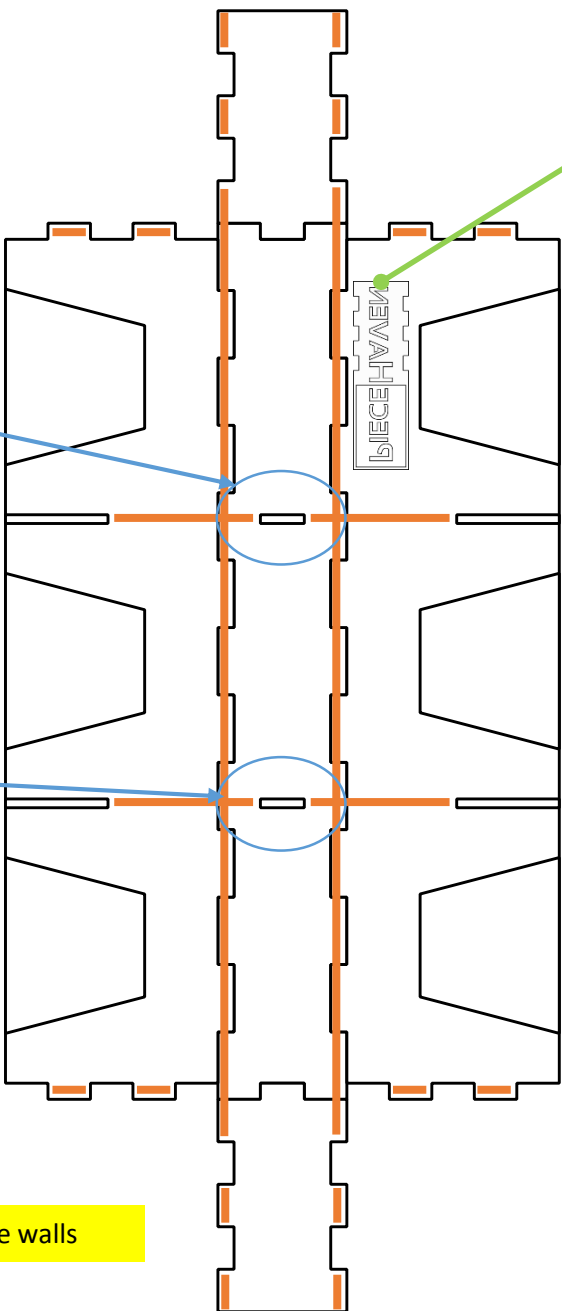


** This sheet is 3mm thin, NOT 5mm

STEP 1 – Apply glue



STEP 2 – Insert 3mm thin divider as shown here

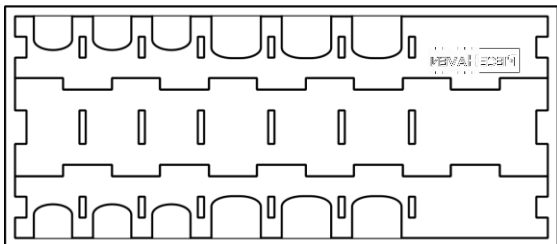


STEP 3 – Assemble all side walls

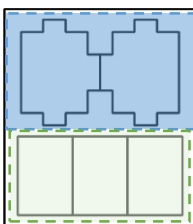
TOKENS TRAY



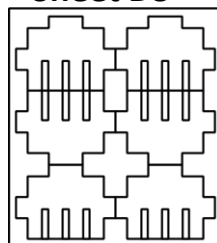
Sheet D1



Sheet D2

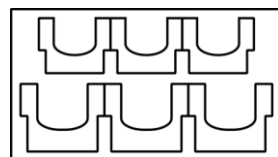


Sheet D3 **



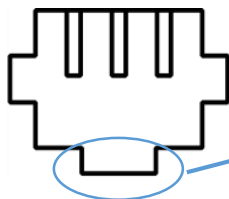
** This sheet is 3mm thin, NOT 5mm

Dividers **



STEP 1 – Apply glue

STEP 2 – Insert all **SIX 3mm thin intermediate walls shown here**

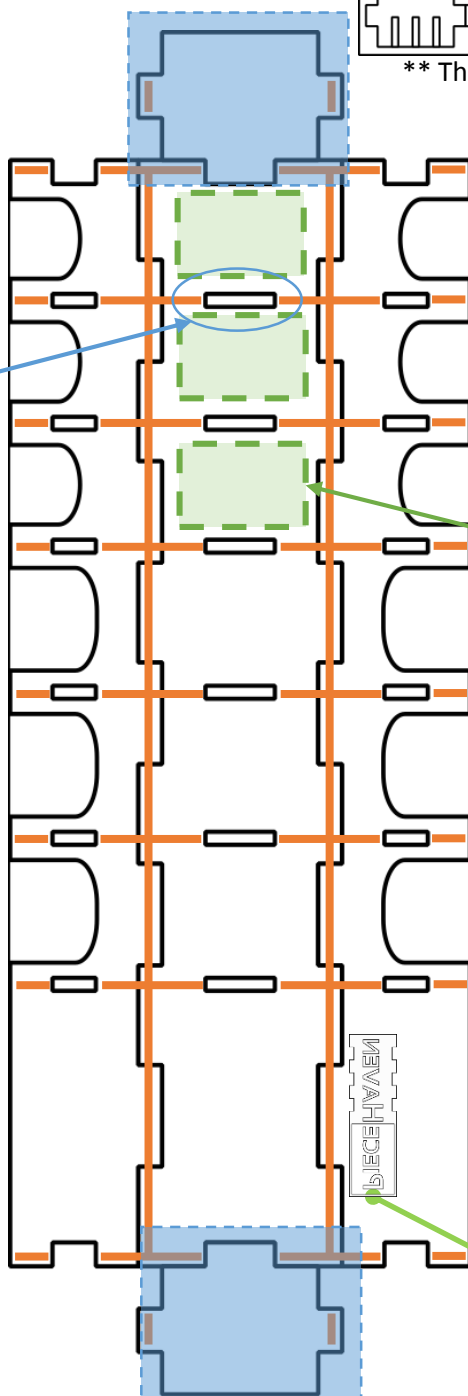


STEP 3 – Fold up and assemble all side walls



STEP 4 – Glue 'platforms' horizontally to the bottom of the smaller **THREE compartments**

There are 2 sizes of dividers. Refer to page 9 for placement of dividers and tokens.

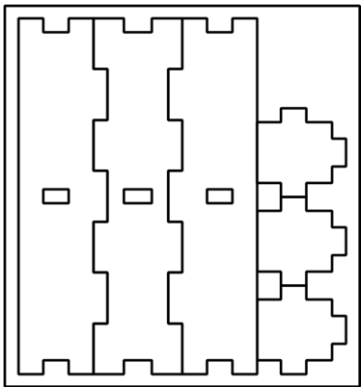


Logo facing outside

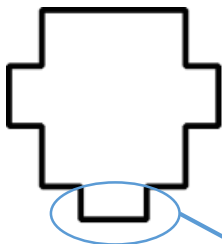
GOLD TRAY



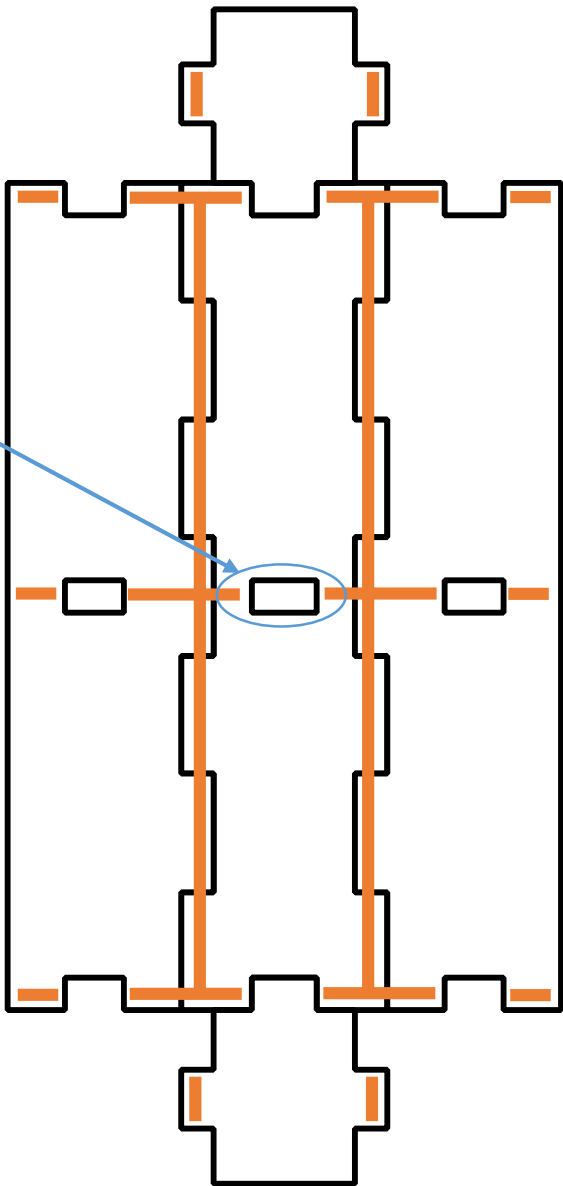
Sheet E1



STEP 1 – Apply glue



**STEP 2 – Insert
intermediate wall shown
here**

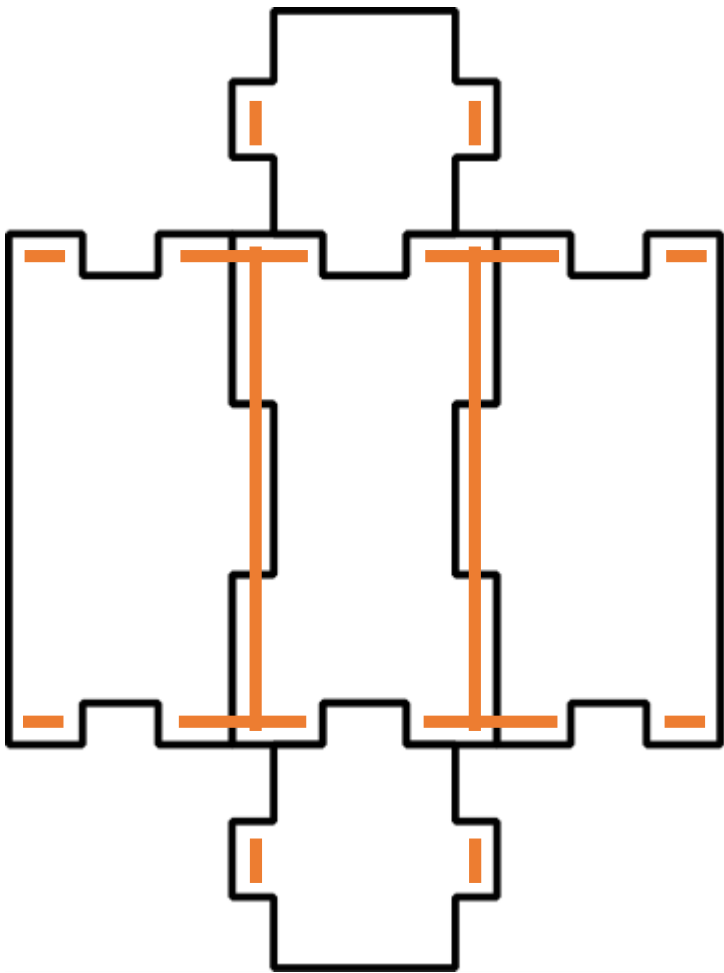
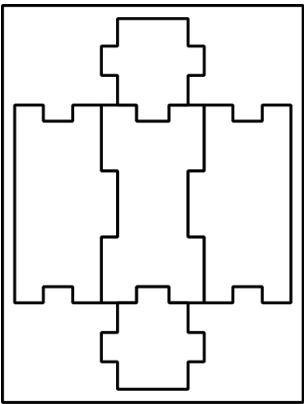


**STEP 3 – Fold up and
assemble side walls**

DRAGON CUBES TRAY

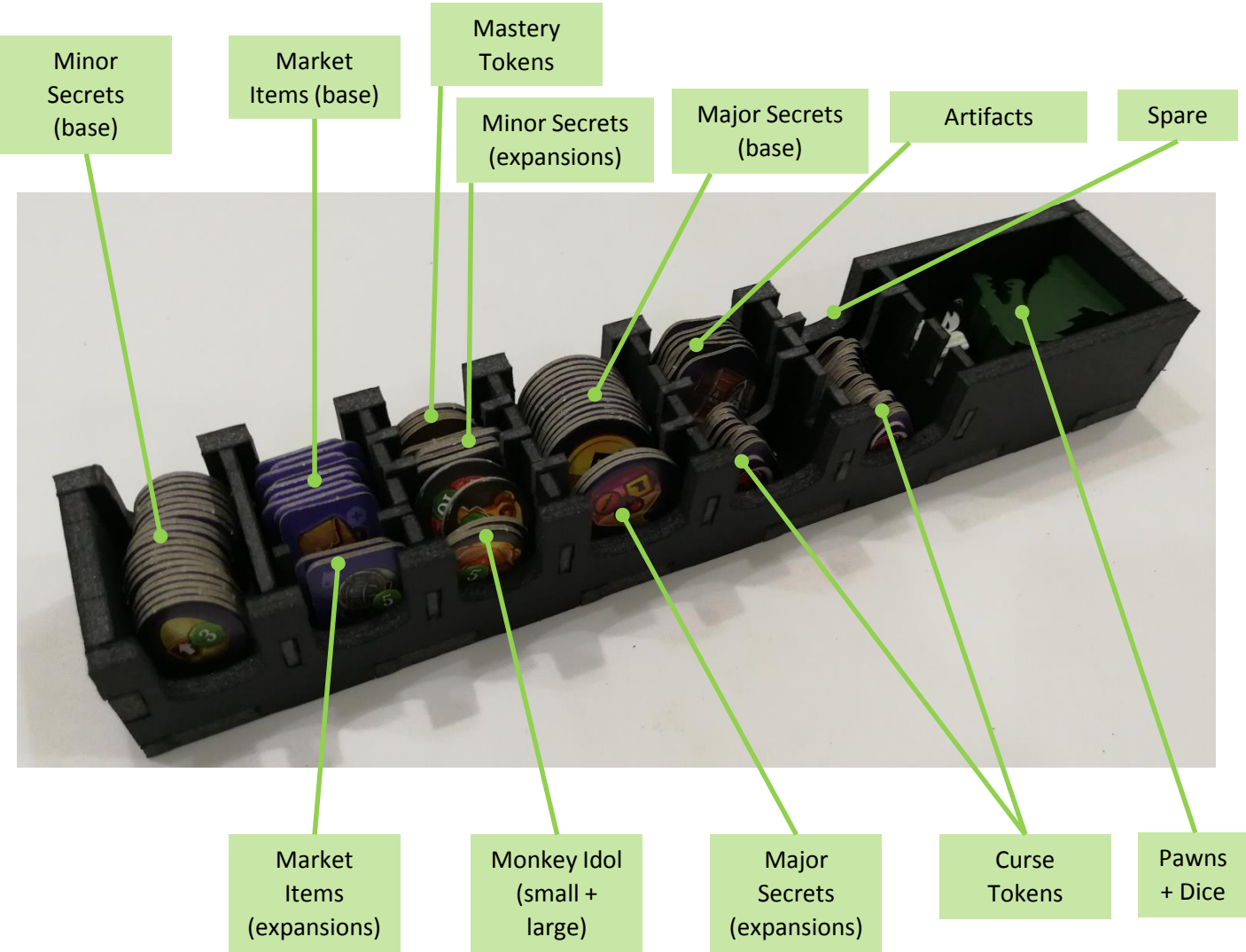


Sheet F1

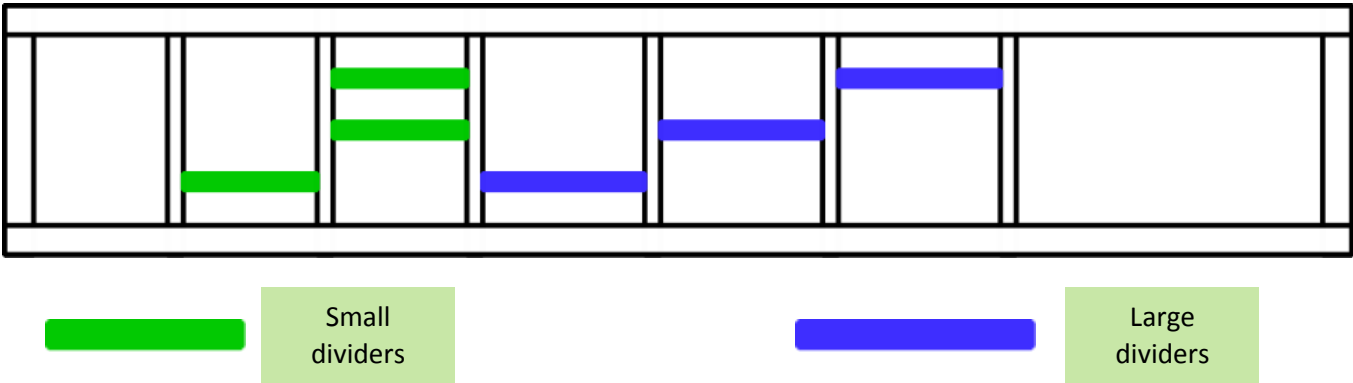




TOKEN TRAY – COMPONENT AND DIVIDER LAYOUT

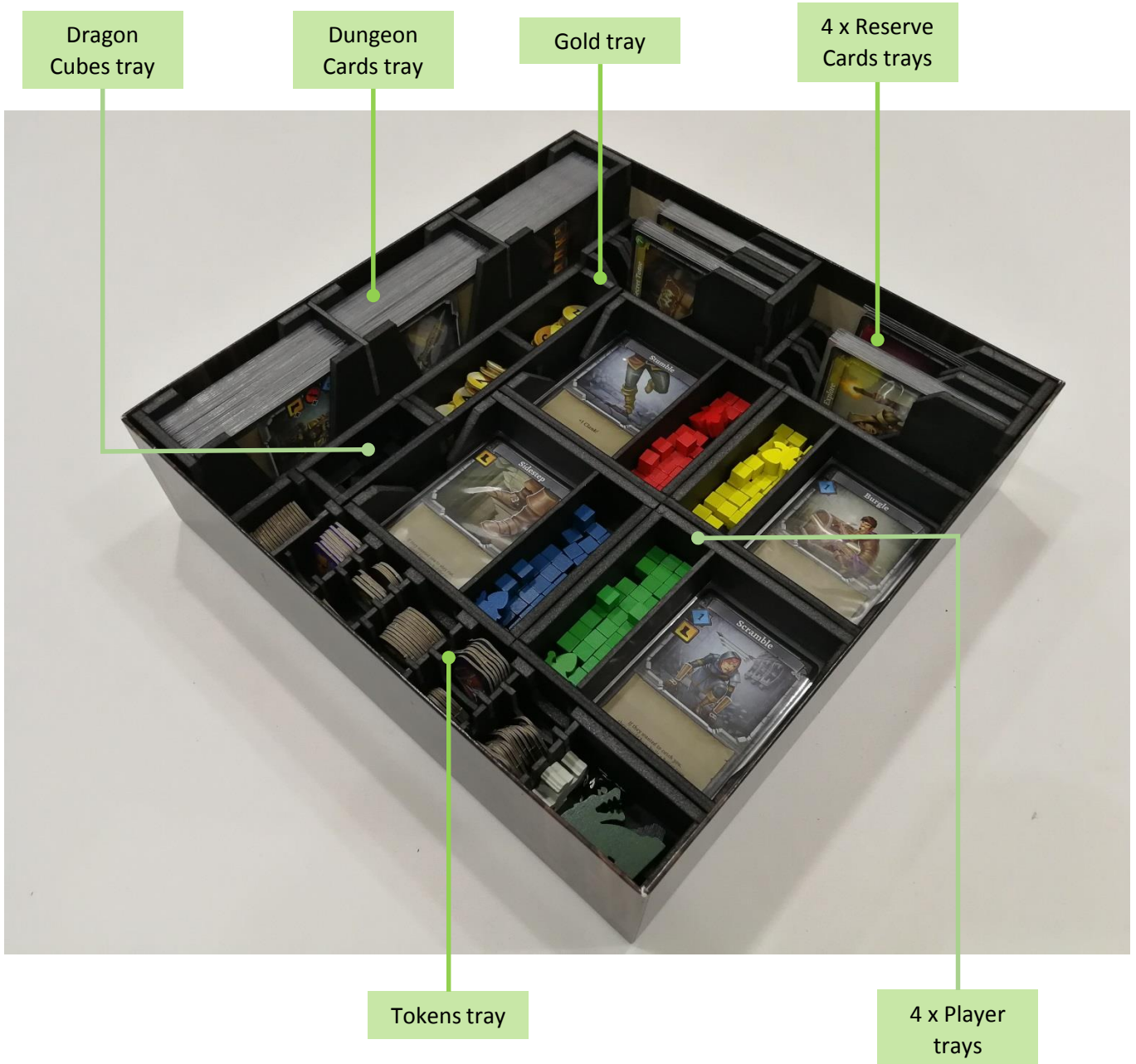


DIVIDER LAYOUT



COMPONENTS LAYOUT

BOTTOM LAYER



COMPONENTS LAYOUT

TOP LAYER



All boards,
rulebooks and cubes
bag